



Japanese Bobtail

Body Type: Foreign

Weight: 2.5 to 4kg / 5lb to 8lb **Origin:** Japan, USA (longhair)

Temperament: Friendly, sociable

The roots of the Japanese Bobtail can be traced to bobtailed cats that were brought to Japan from China over 1,000 years ago.

After the Second World War, Americans began to take the cats home with them and, after improvements were made to the breed, the cats were established as bobtails and accepted for championship by the CFA in 1976.

The Japanese Bobtail is characterized by its short, kinked tail (bobtail), roughly 7cm (3 inches) long.

The Japanese Bobtail gene is recessive, which means that if either one of the parents has a normal length tail, the bobtail gene is almost never passed on to the offspring.

Some 300 years ago, the Japanese Bobtail began to appear in wood prints, etc., and it is not regarded as an unusual breed in Japan, while its unique bobtail and exotic facial appearance make it very popular with cat fanciers around the world.

Assembly Instructions



----- **Mountain fold.**



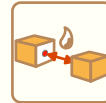
- - - - - **Valley fold.**



————— **Cut line.**



△ **A triangle mark indicates a glue tab.**



● **A red dot indicates a glue tab to be used to glue to another part.**

Tools and materials



Scissors, straightedge, glue (we recommend craft glue), a round stick such as a pencil (used for applying curvature to paper).

Assembly tip



Crease all mountain folds and valley folds before gluing, and apply curvature to curved portions.

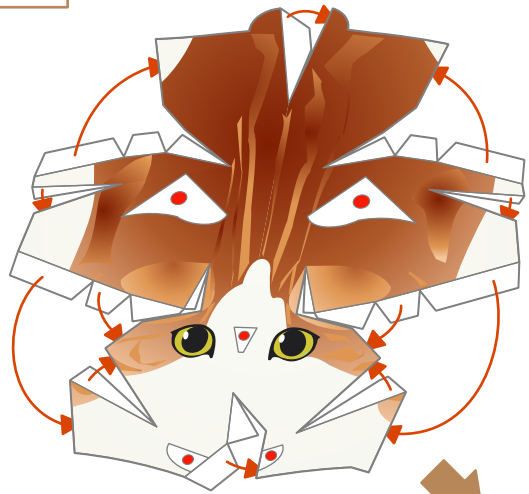
Caution



Keep glue away from small children.

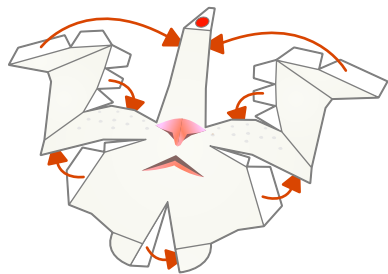
Attach → Curve - - - - -

A HEAD



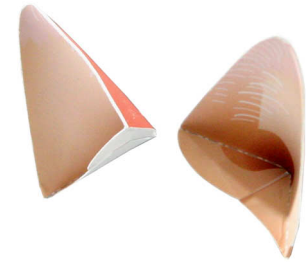
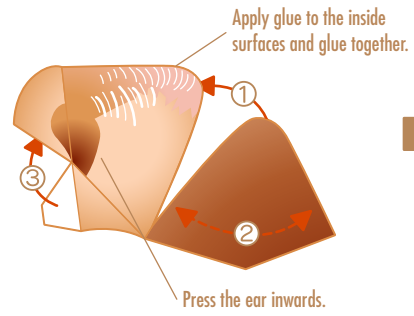
Assembled parts

B MUZZLE



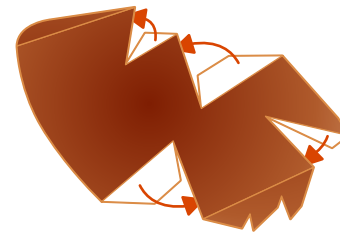
Assembled parts

C EAR(Left) D EAR(Right)



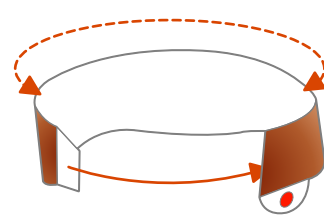
Assembled parts

E TAIL



Assembled parts

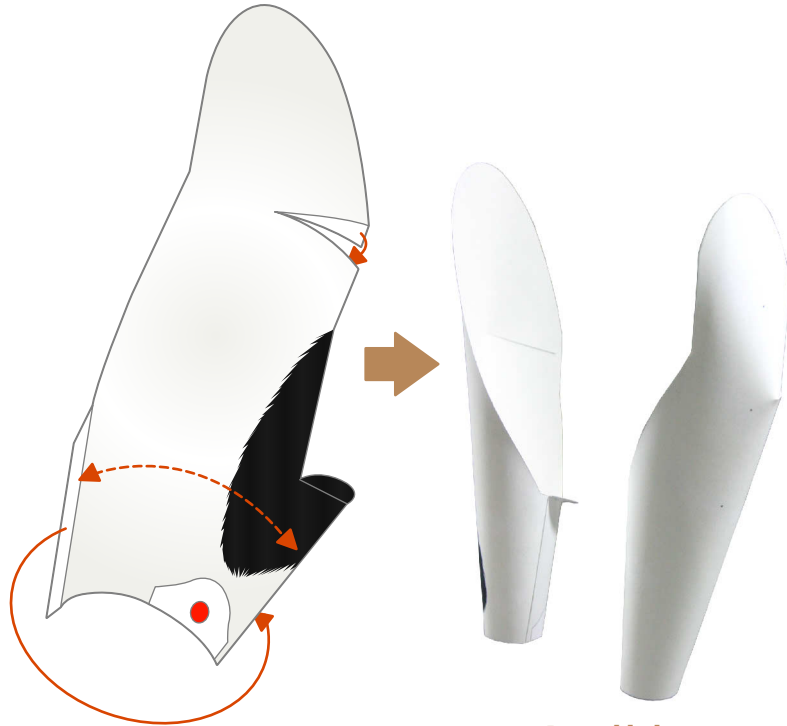
F NECK



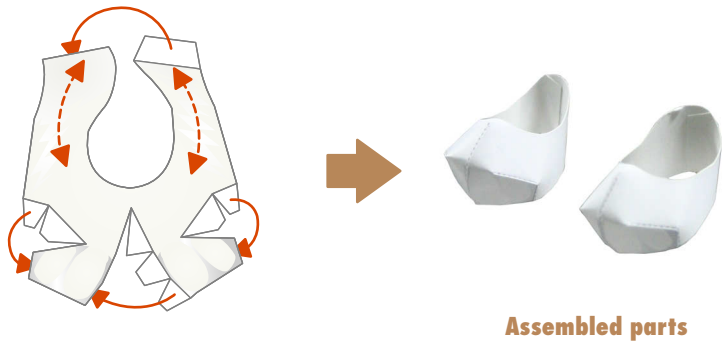
Assembled parts

Attach ———> Curve - - - ->

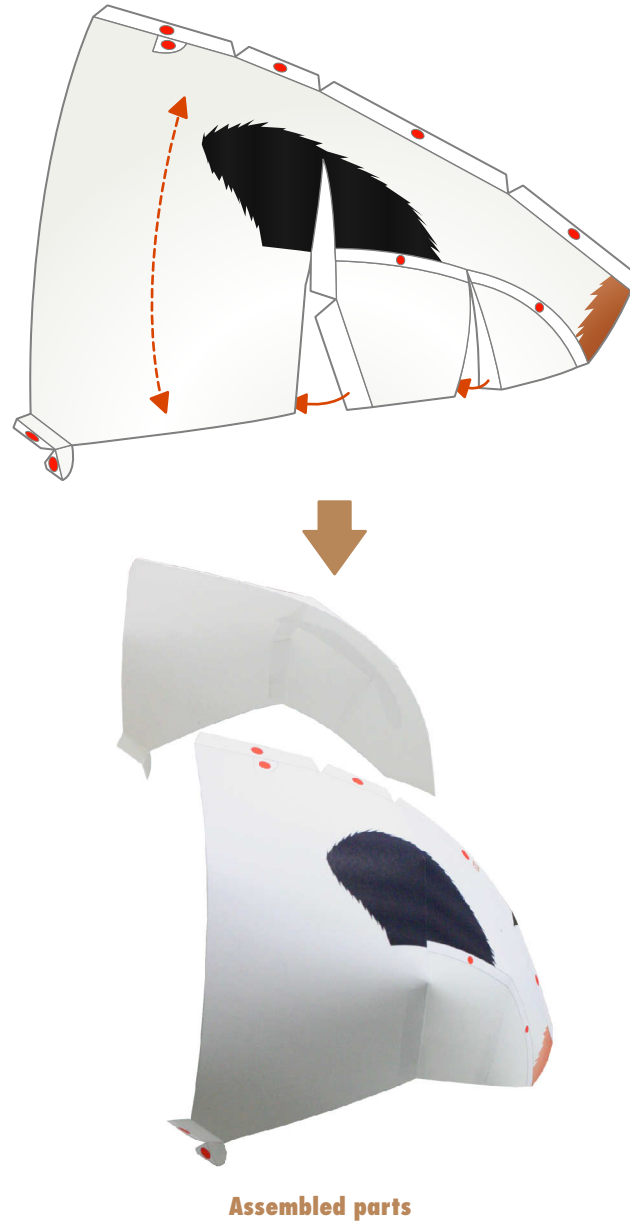
G FRONT LEG 1(Left) **H** FRONT LEG 1(Right)



I FRONT LEG 2(Left) **J** FRONT LEG 2(Right)

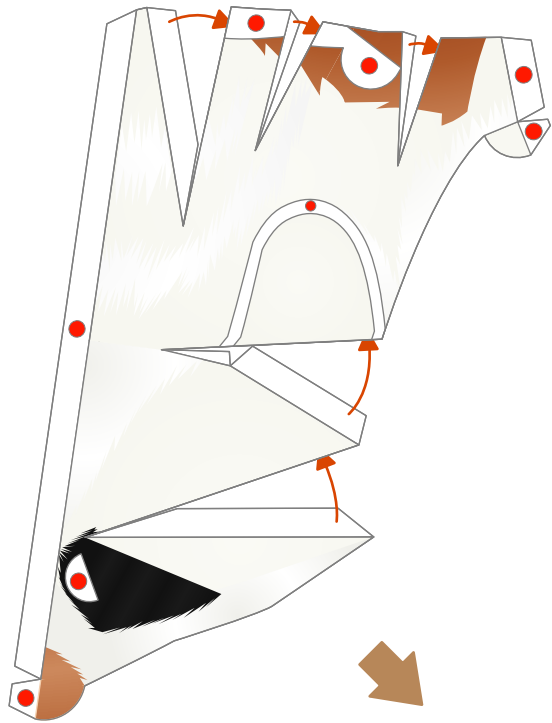


K BACK(Left) **L** BACK(Right)



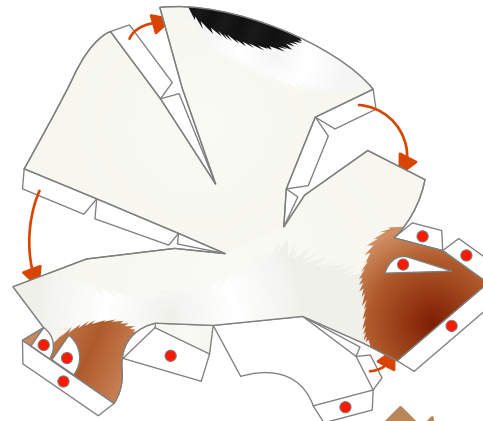
Attach ———> Curve - - - ->

M BELLY(Left) N BELLY(Right)



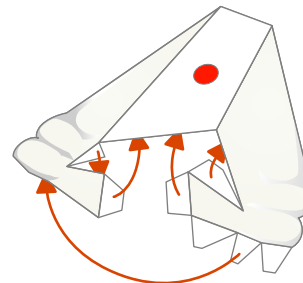
Assembled parts

O HIND LEG 1 (Left) Q HIND LEG1 (Right)



Assembled parts

P HIND LEG 2(Left) R HIND LEG 2(Right)

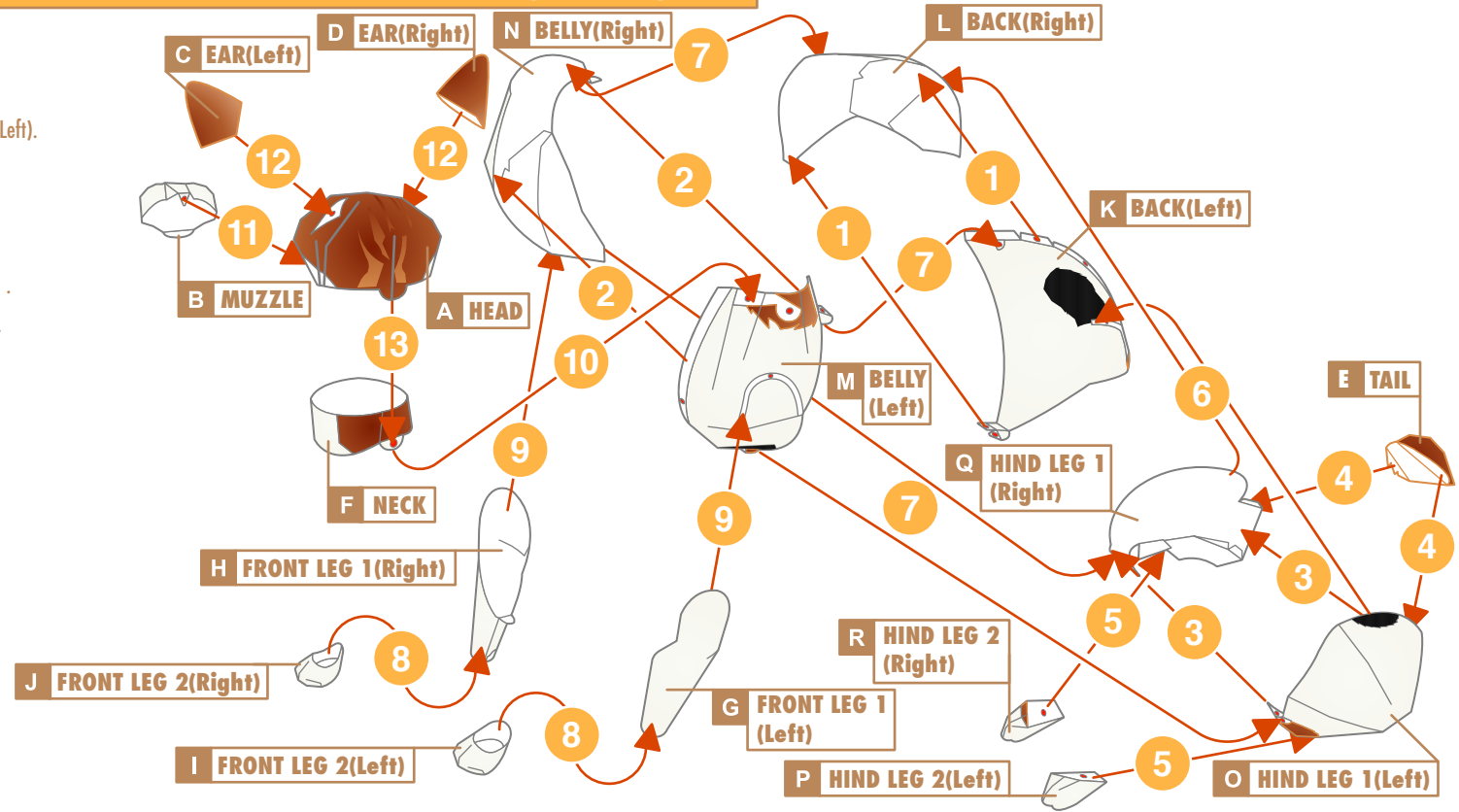


Assembled parts

Attach → Curve - - - - -

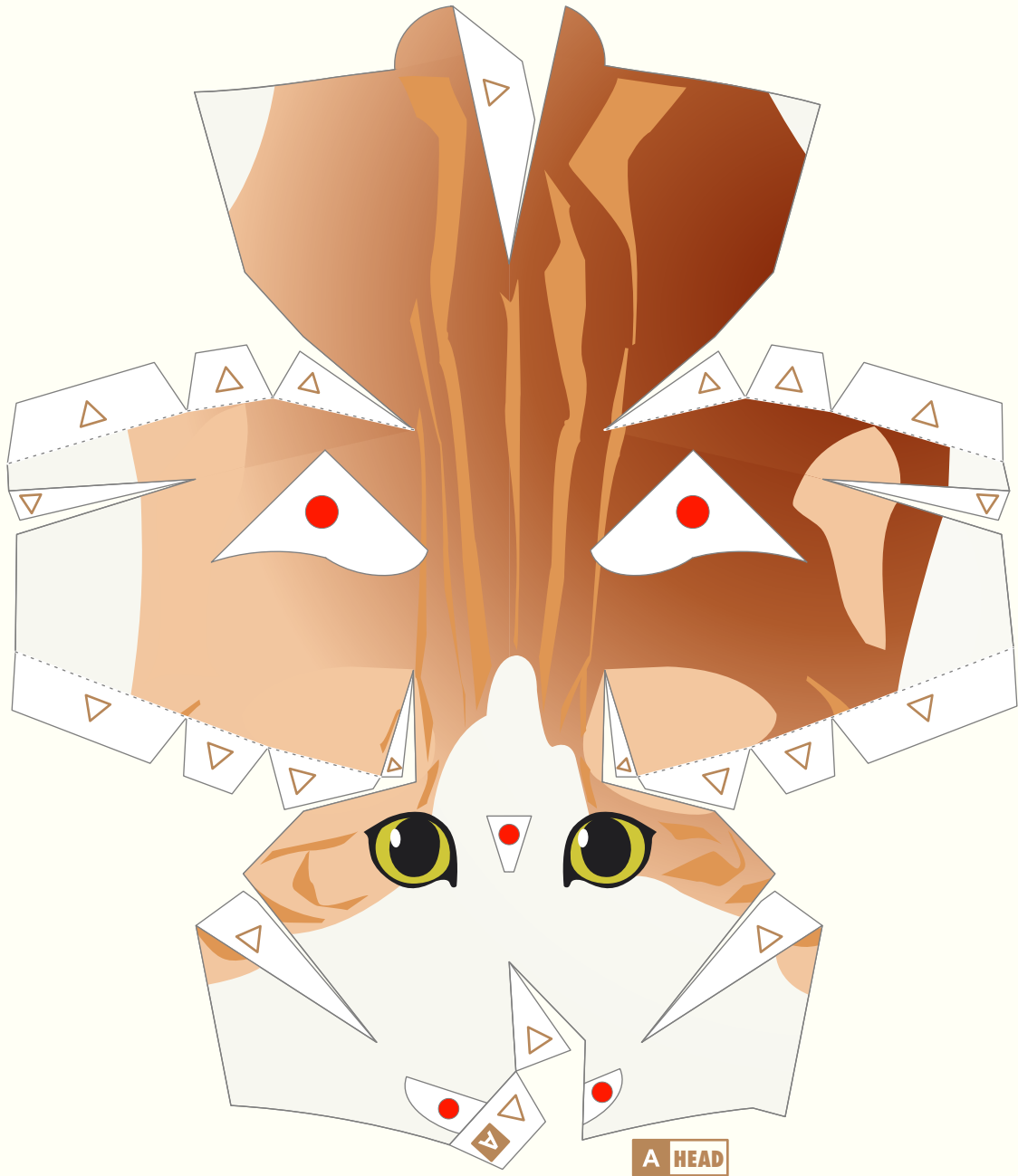
★ **Final assembly** Put the parts together in the order indicated by steps ① through ⑬ below.

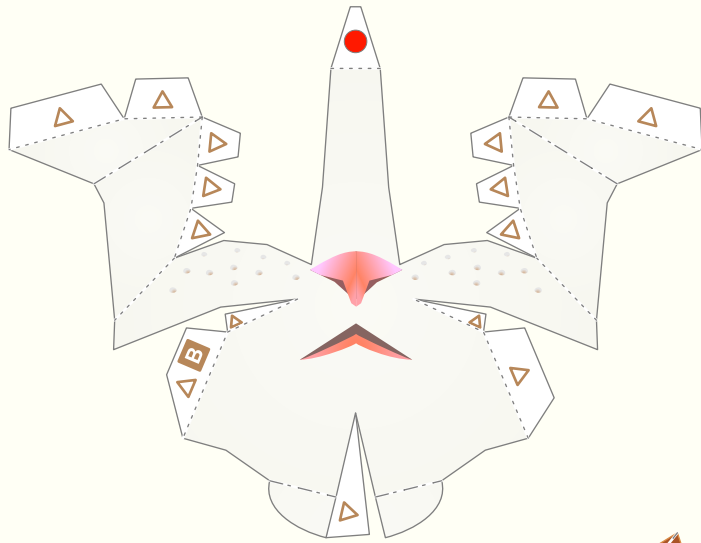
- ① Glue BACK (Left) to BACK (Right).
- ② Glue BELLY (Left) to BELLY (Right).
- ③ Glue HIND LEG (Right) to HIND LEG (Left).
- ④ Glue TAIL to HIND LEGS.
- ⑤ Glue HIND LEGS 2 to HIND LEGS 1.
- ⑥ Glue HIND LEGS 1 to BACK.
- ⑦ Glue BELLY to BACK and HIND LEGS 1.
- ⑧ Glue FRONT LEGS 2 to FRONT LEGS 1.
- ⑨ Glue FRONT LEGS 1 to BELLY.
- ⑩ Glue NECK to BELLY.
- ⑪ Glue MUZZLE to HEAD.
- ⑫ Glue EARS to HEAD.
- ⑬ Insert HEAD into NECK.



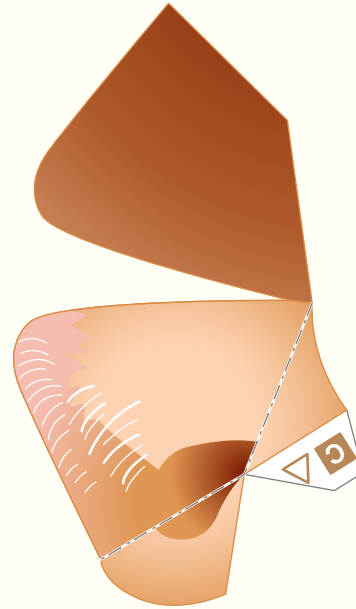
★ **Complete photo**



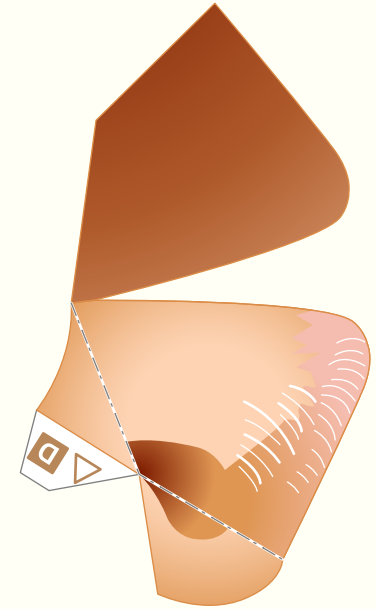




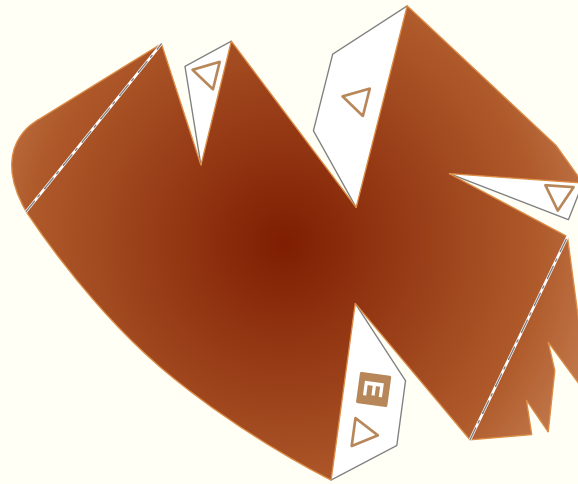
B MUZZLE



C EAR(Left)



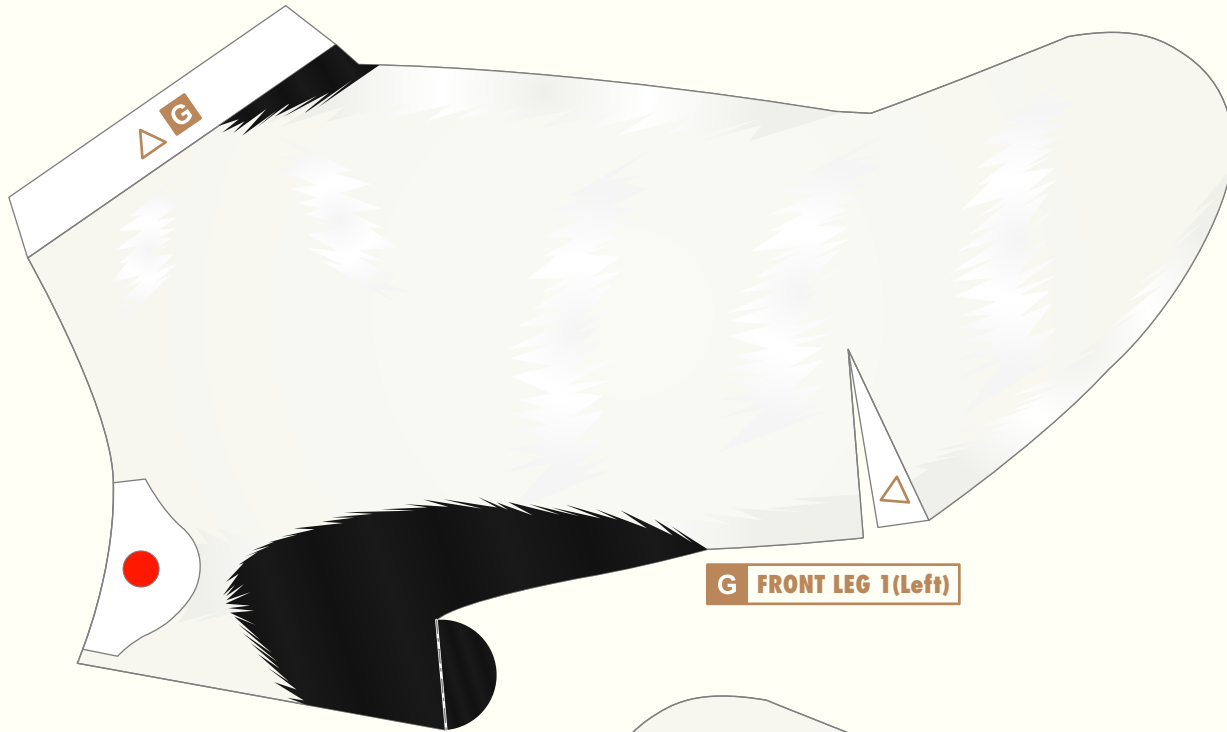
D EAR(Right)



E TAIL



F NECK



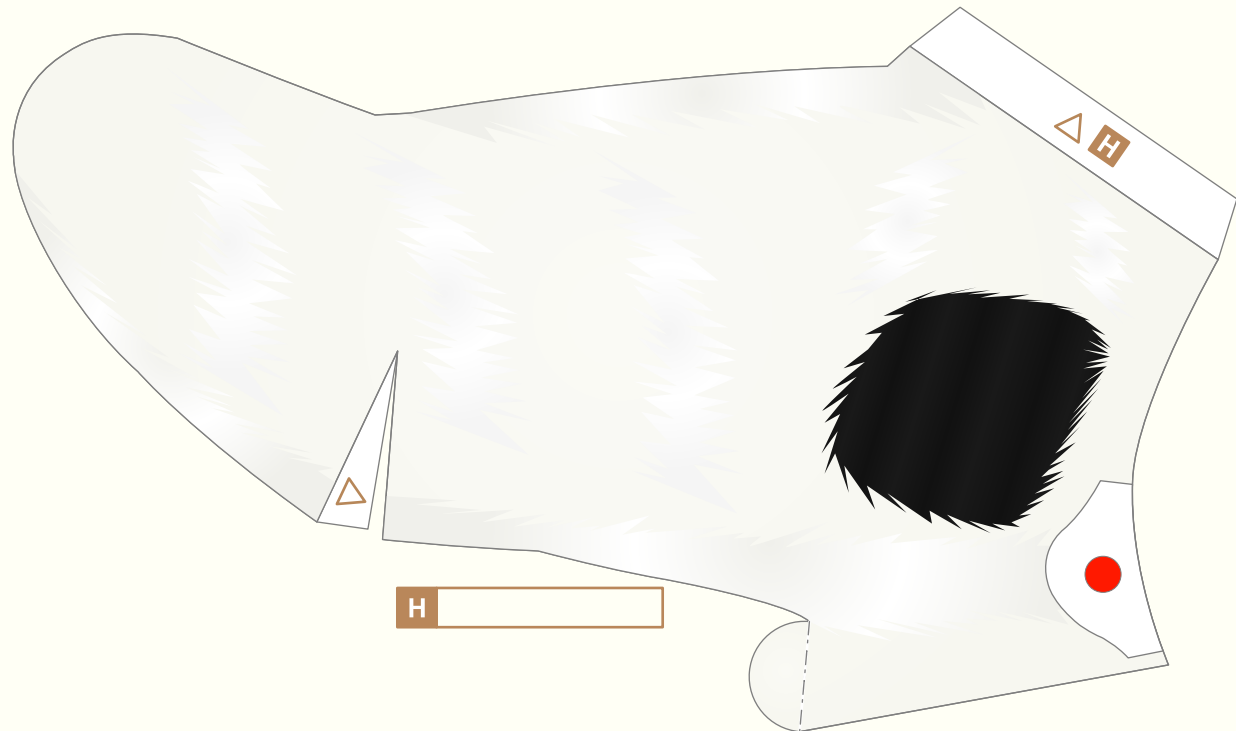
G FRONT LEG 1(Left)



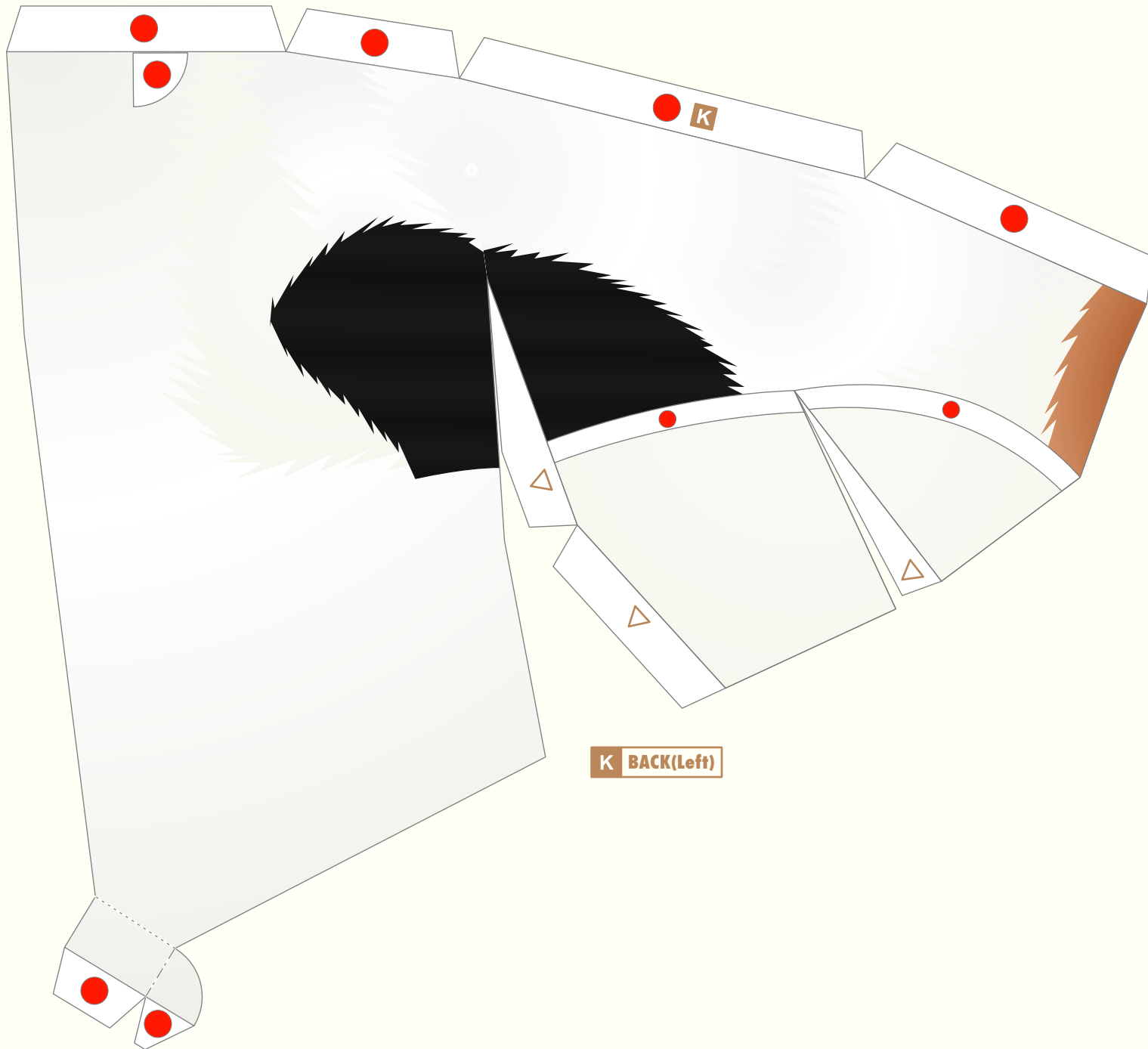
I FRONT LEG 2(Left)



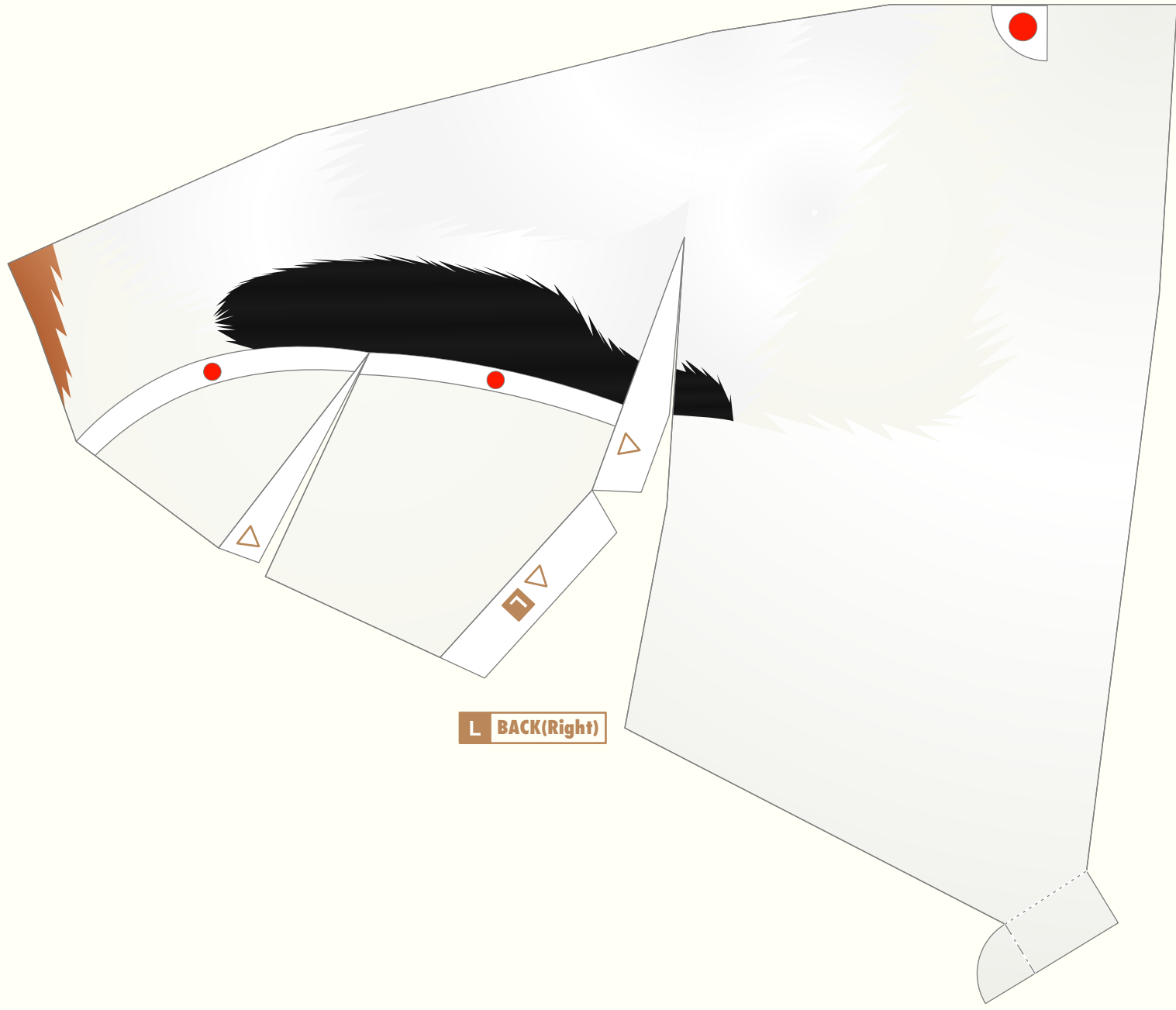
J FRONT LEG 2(Right)



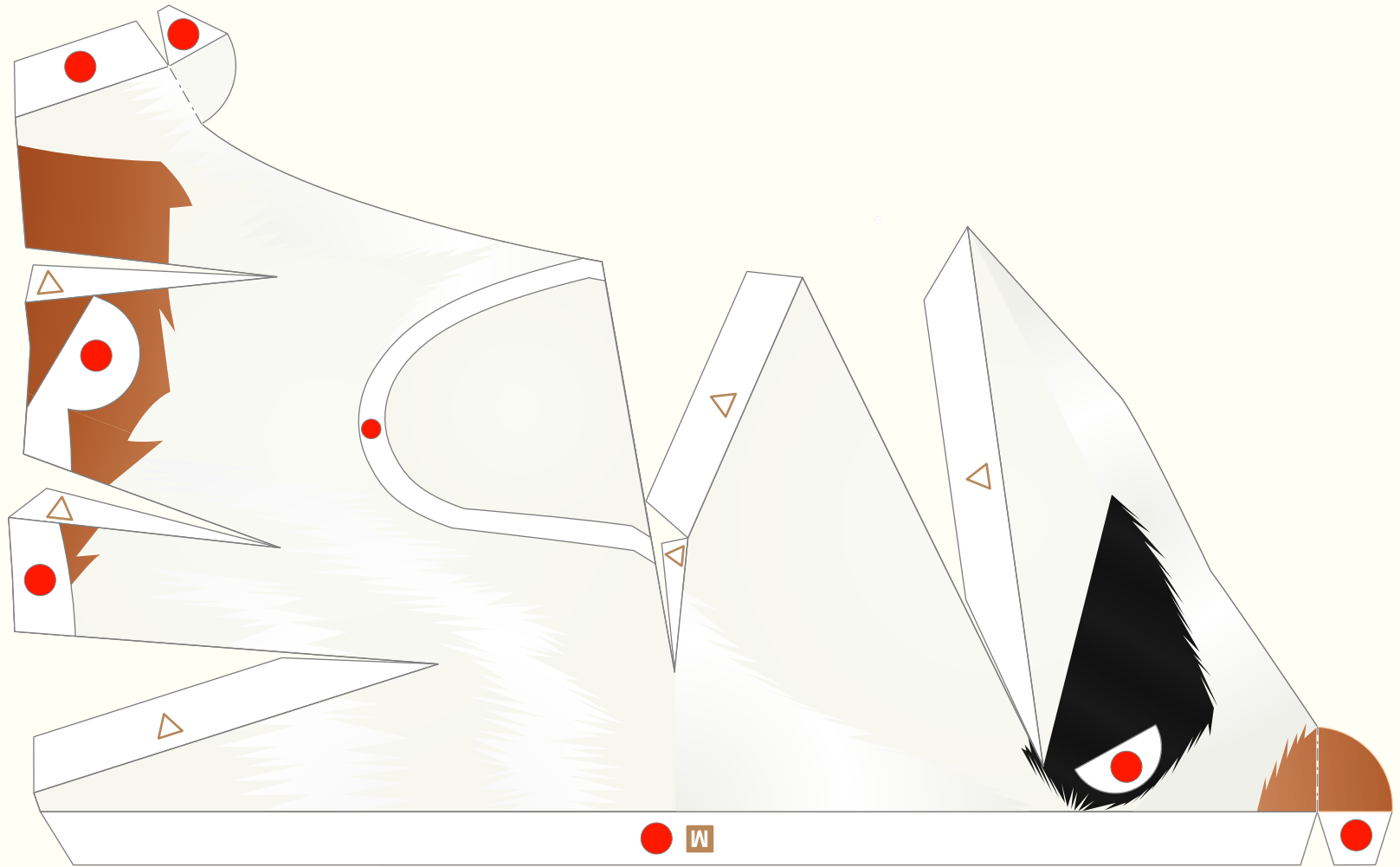
H



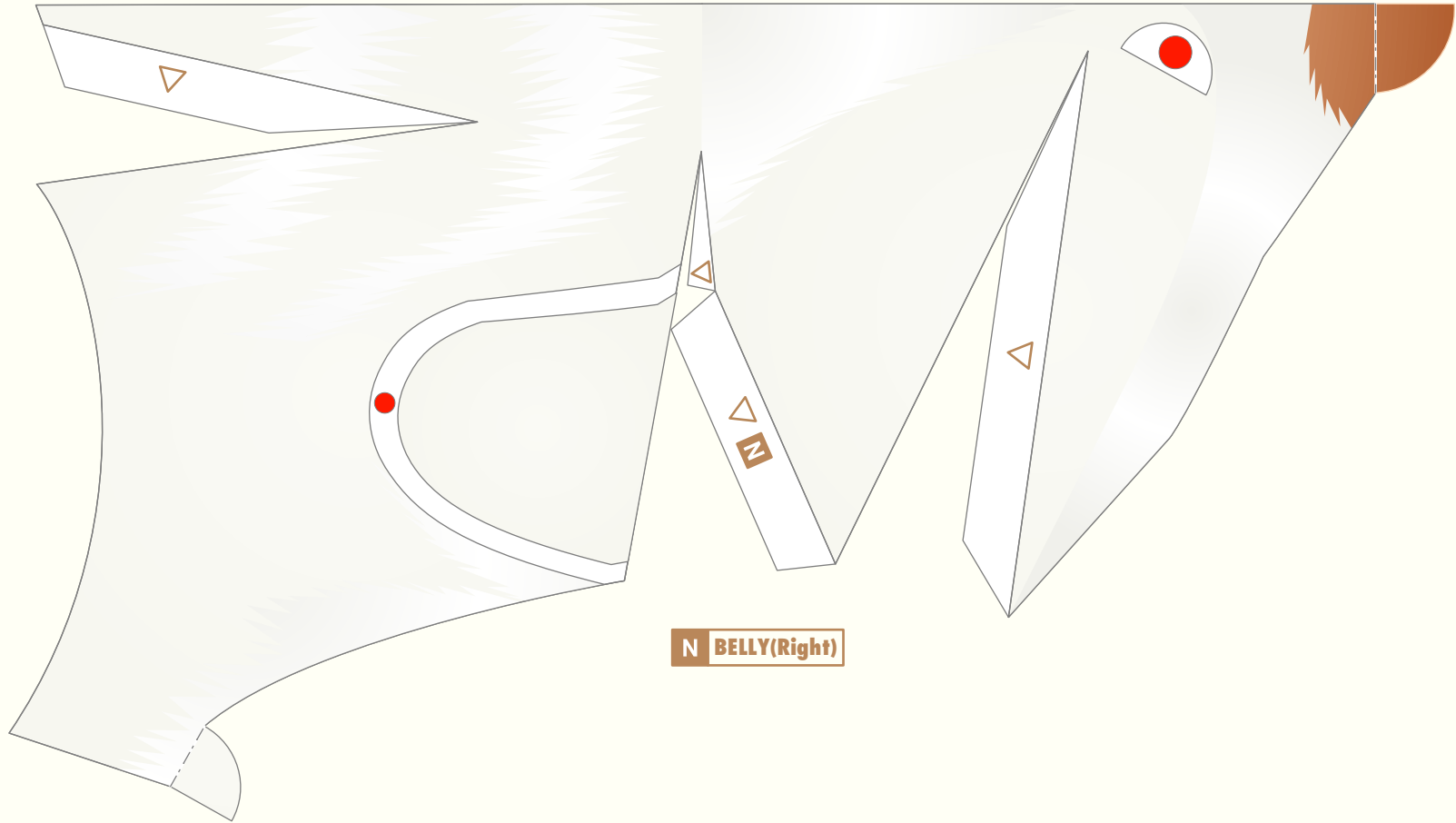
K BACK(Left)



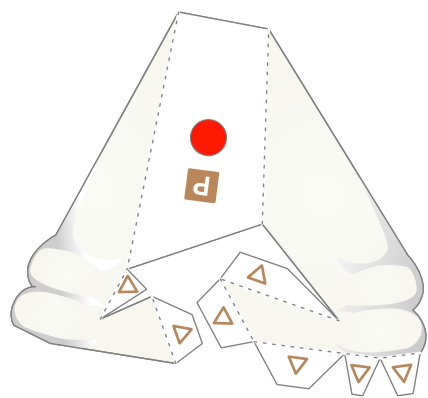
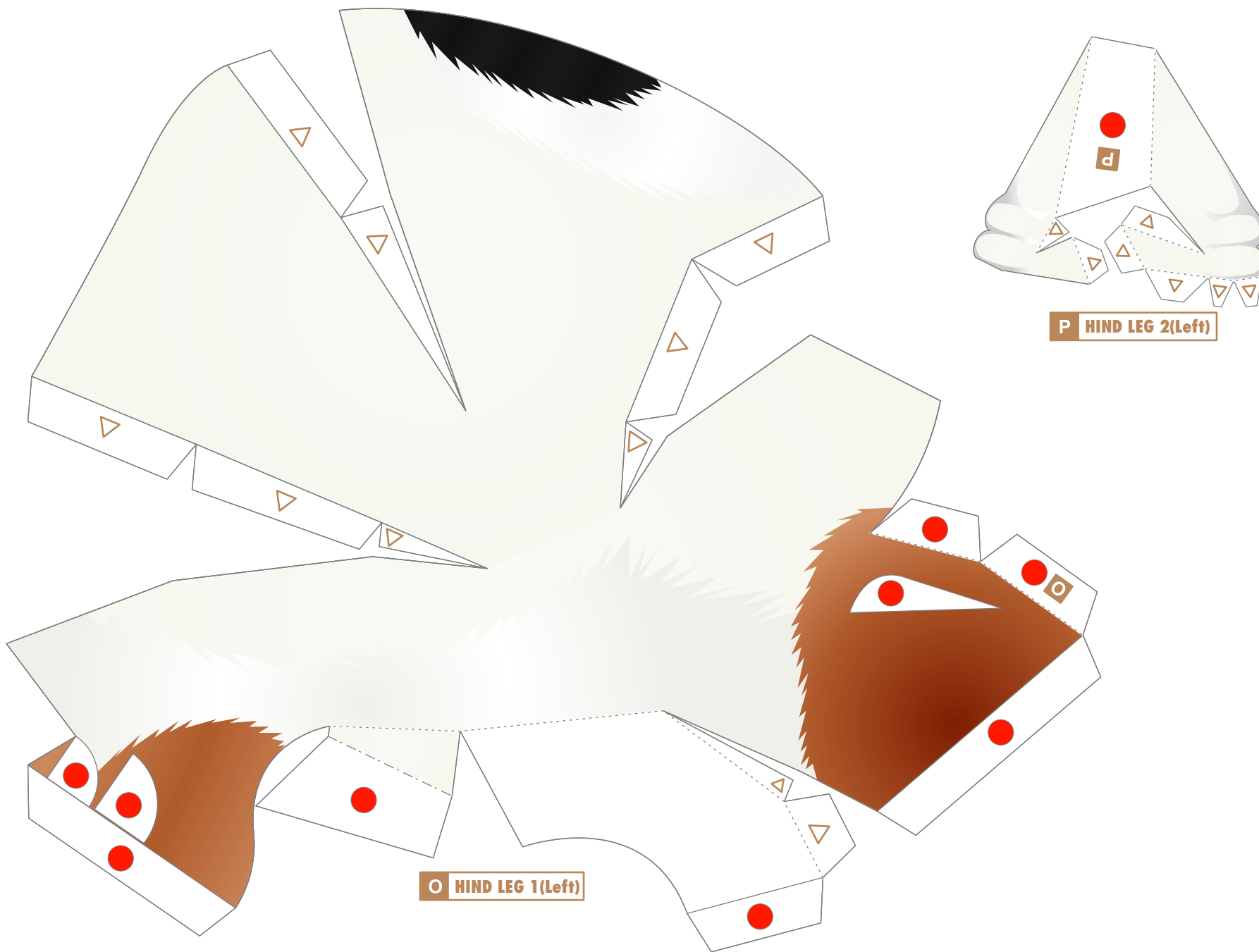
L BACK(Right)



M BELLY(Left)

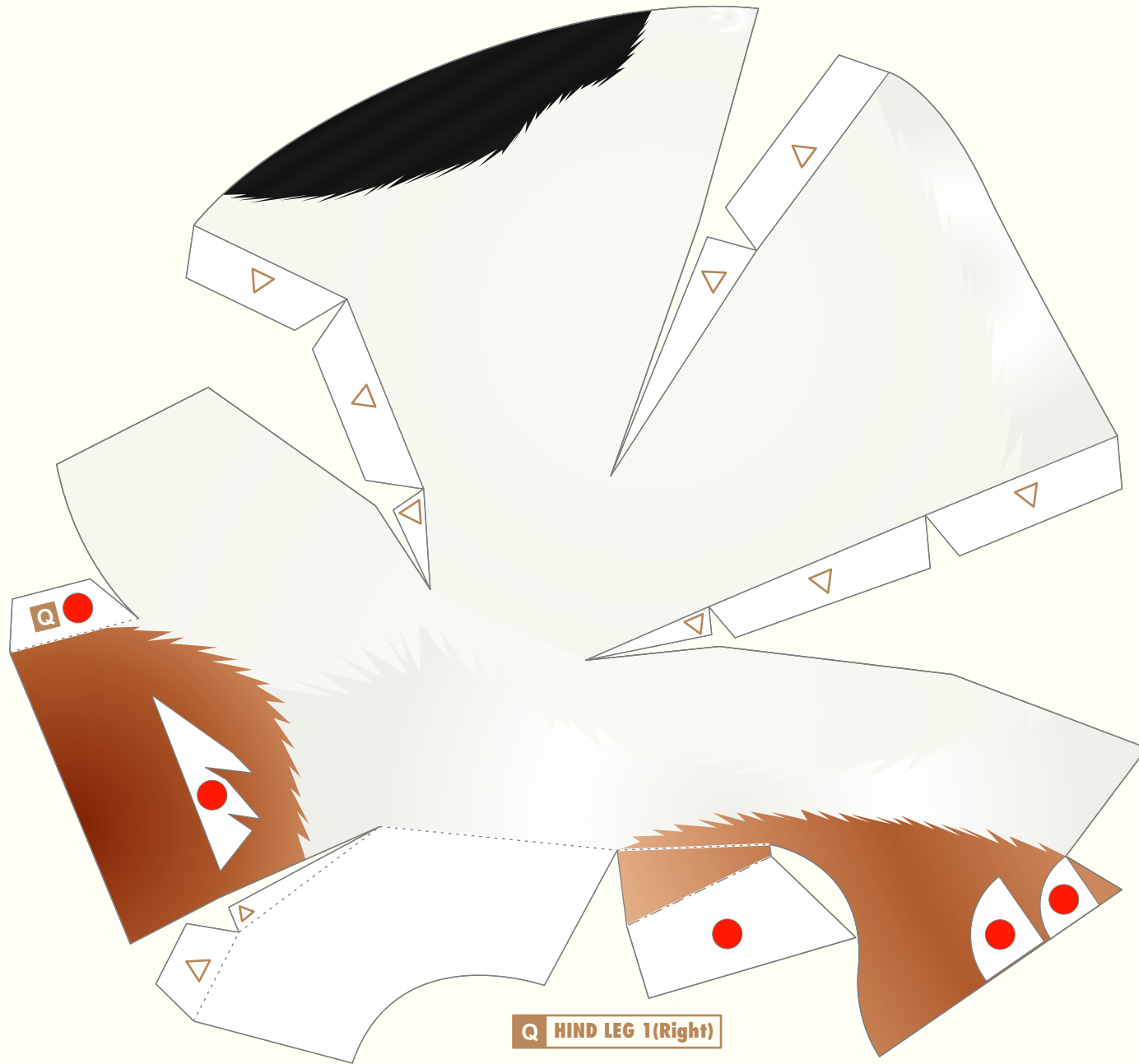


N BELLY(Right)

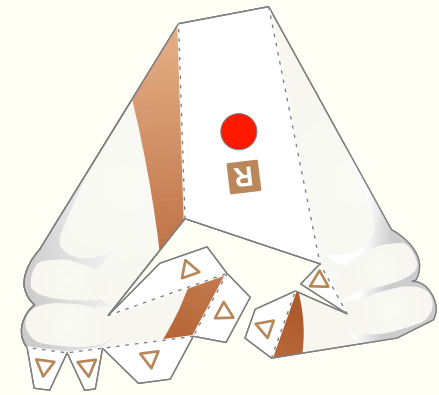


P HIND LEG 2(Left)

O HIND LEG 1(Left)



Q HIND LEG 1(Right)



R HIND LEG 2(Right)